



# ECOGRAFÍA DE AORTA ABDOMINAL



Hospital Universitario  
General de Villalba

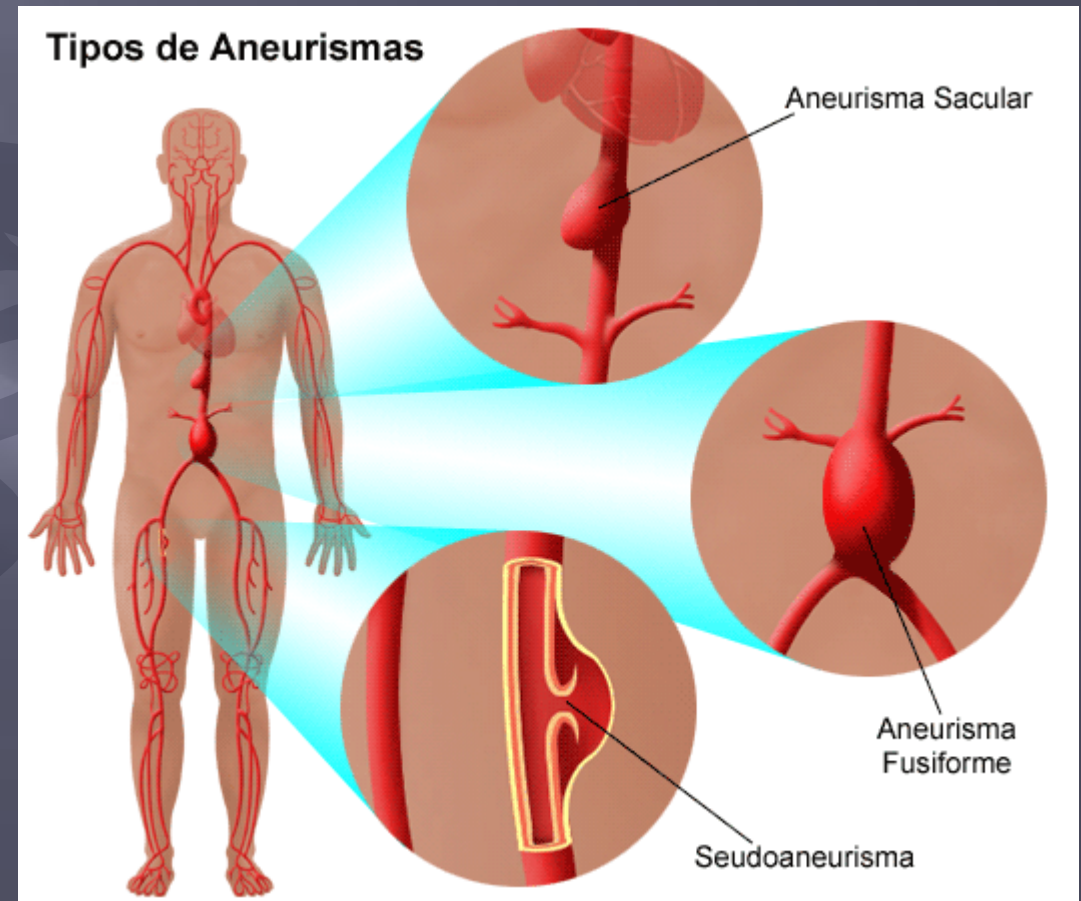
Dr. Alejandro Gutiérrez Medina  
Médico Adjunto de Urgencias - HUGV

# INTRODUCCIÓN

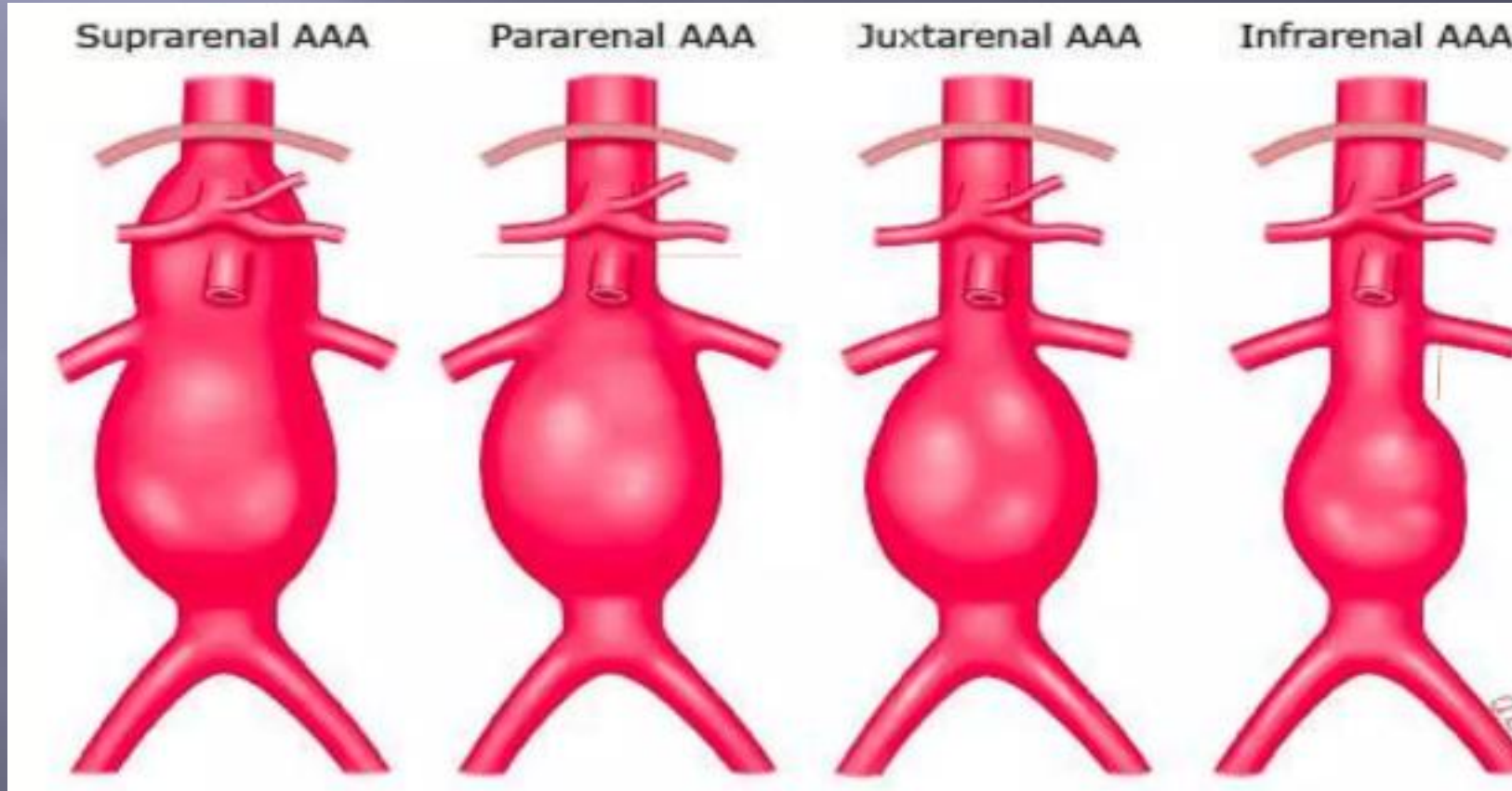
- ▣ Ecografía → mayor Sensibilidad/Especificidad que la Exploración para diagnóstico AAA
  - Exploración → S65% - E78%
  - Ecografía → S95-99% - E99,9%
  - Reduce tiempo de diagnóstico

# ANEURISMA AORTA ABDOMINAL

- ▣ Dilatación → >50% diámetro normal de aorta.
  - 20mm AP → diafragma → **>30mm**
  - 15mm AP → bifurcación iliacas → **>22mm**
  - 9,4-9,6mm AP → A. iliacas → **>15mm**



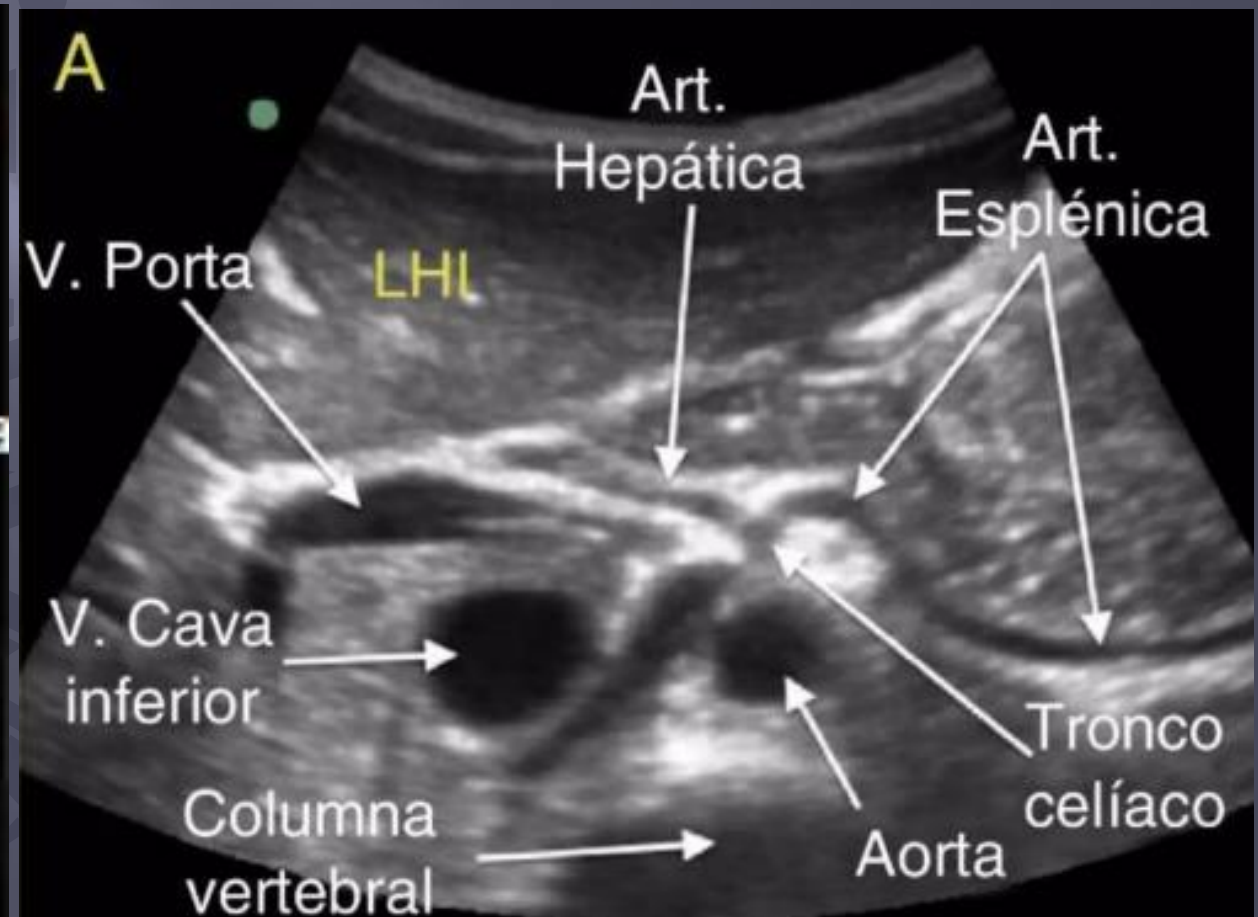
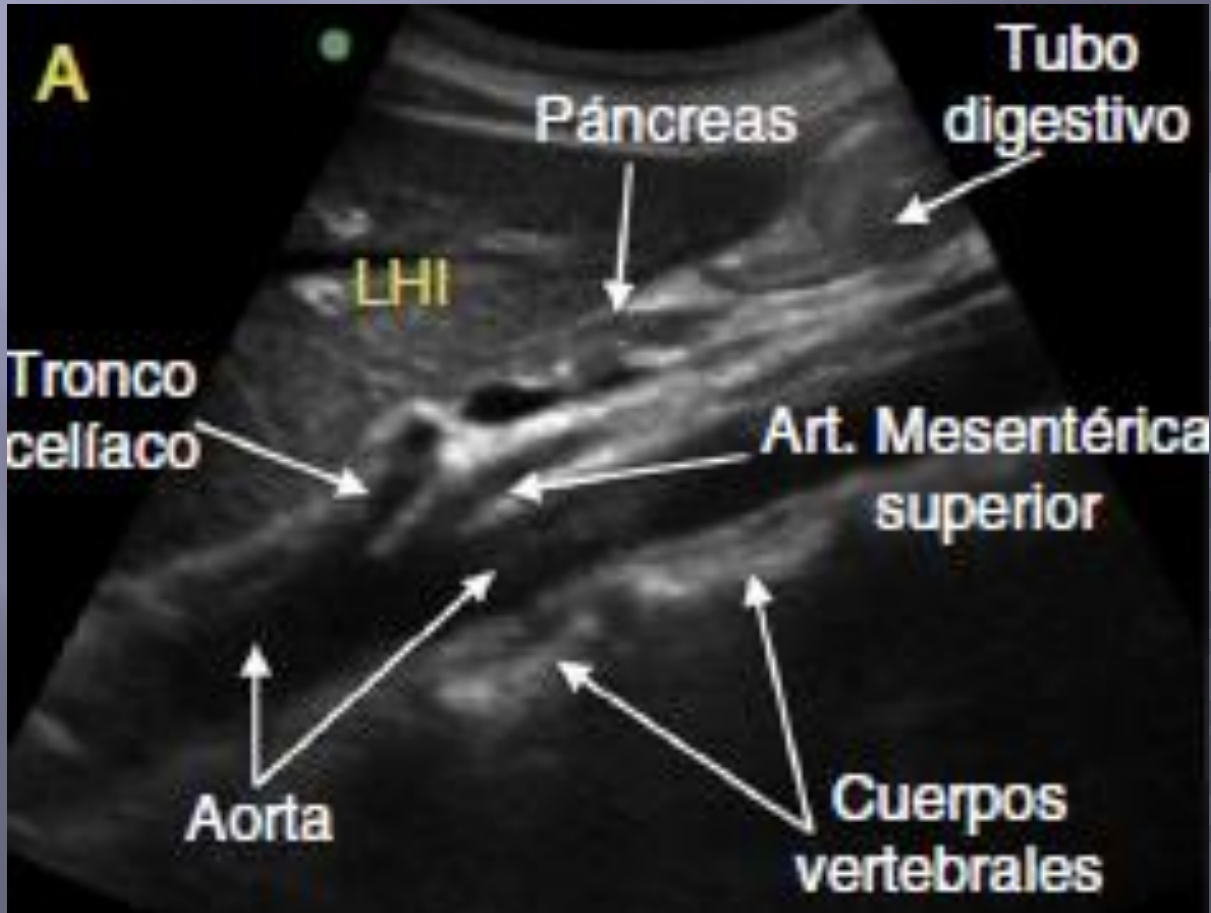
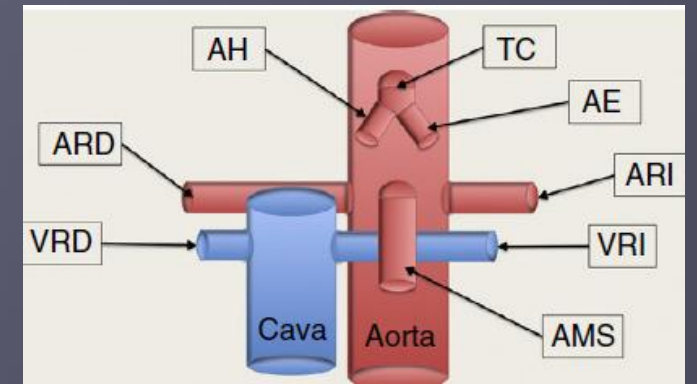
# ANEURISMA AORTA ABDOMINAL



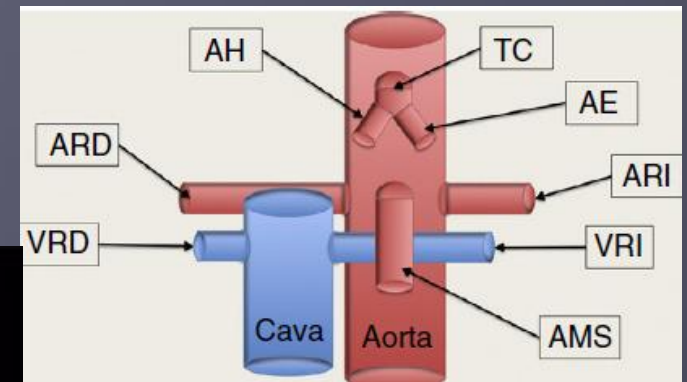
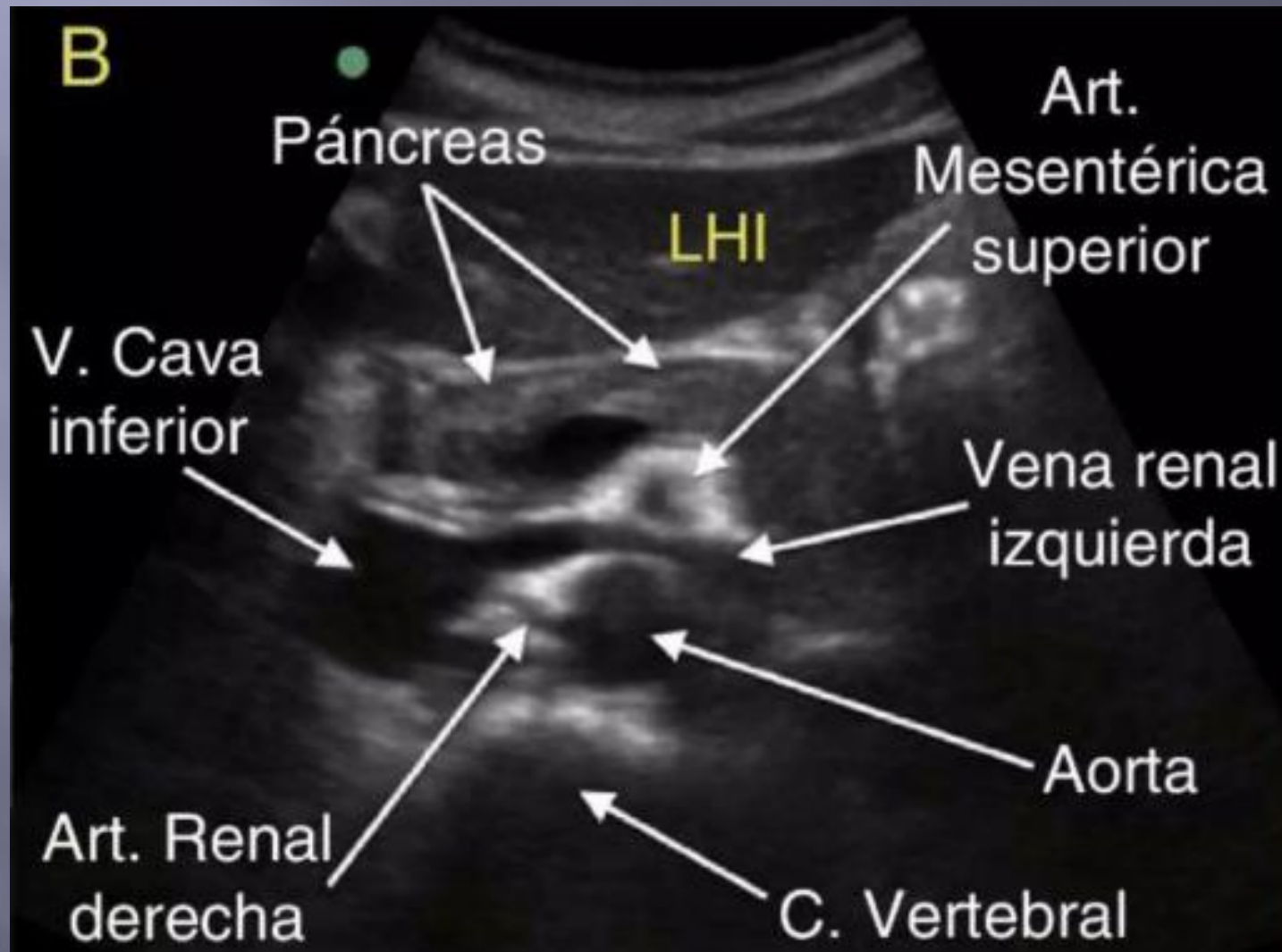
¿Qué sonda usar?



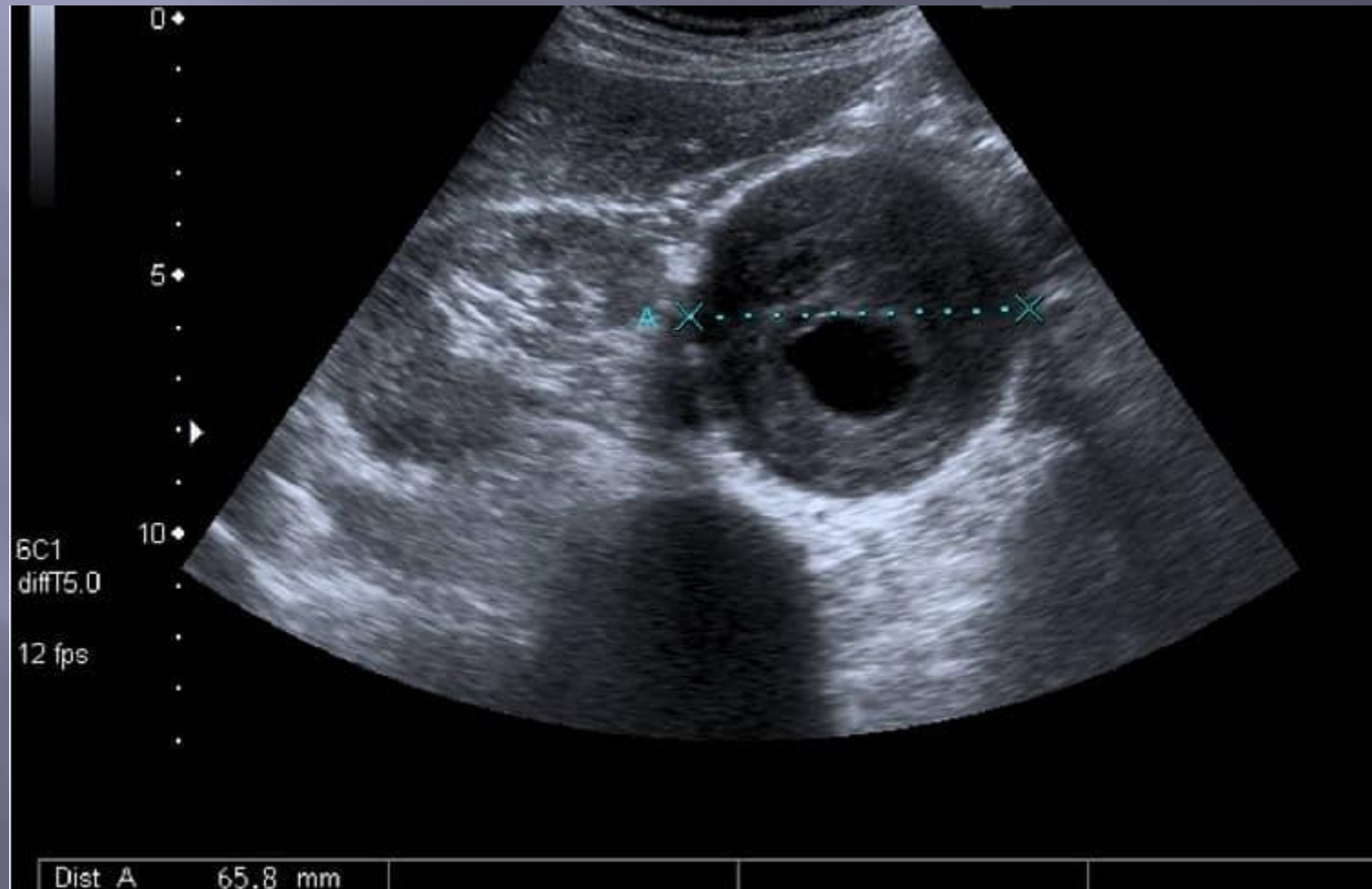
# AORTA ABDOMINAL PROXIMAL



# AORTA ABDOMINAL MEDIA

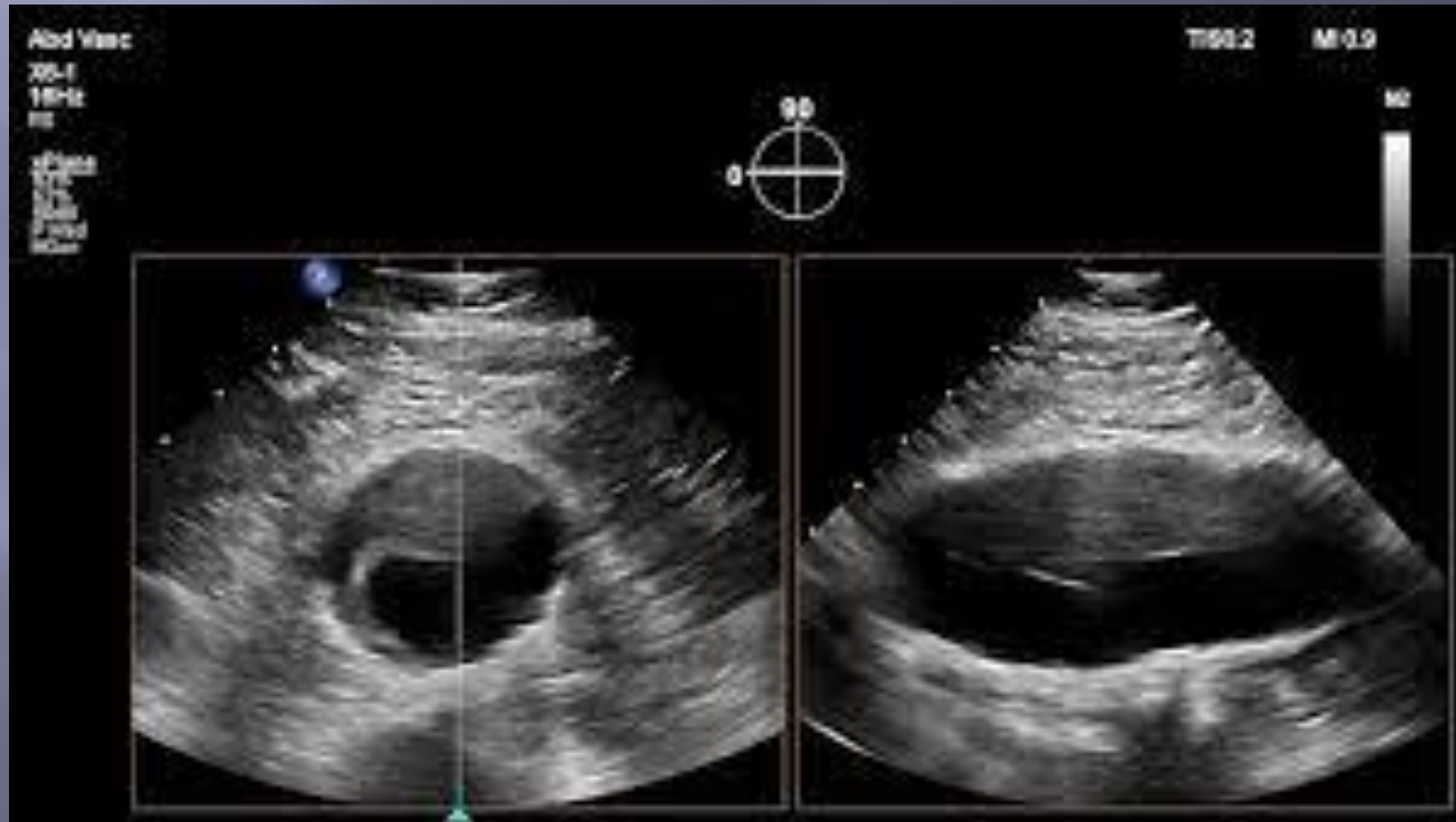


# ANEURISMA AORTA ABDOMINAL





# ANEURIMA AORTA ABDOMINAL





¿ALGUNA PREGUNTA?